

Windows Socket Service Connector

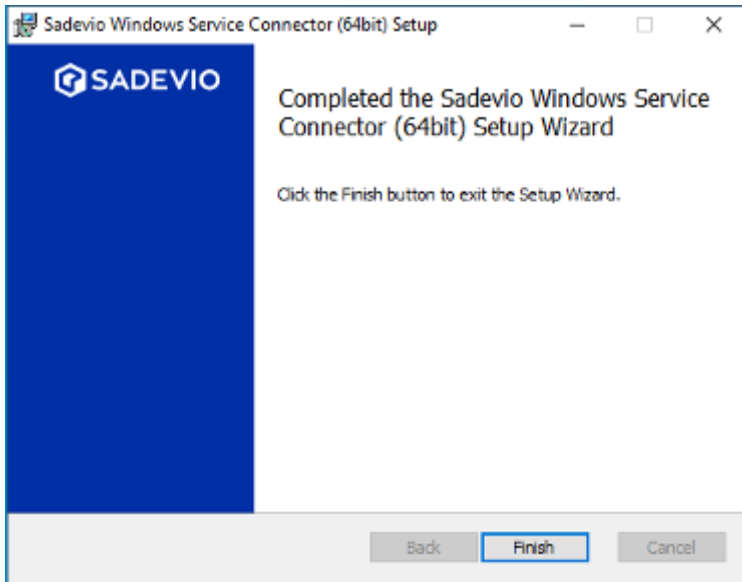
This document shows all functionality of the sadevio windows socket connector. The service can connect on-premise systems with the sadevio cloud solution.

It does provide different interfaces to integrate with different hardware. Like passport scanner, printer or card encoder

- [Installation](#)
- [Configure Access Control Cloud Connector](#)
- [Passport Reader Integration](#)

Installation

Execute to provided installation file and follow the installation wizard.



After the installation was successful executed, you will find the service in the Microsoft services overview.



The configuration file you can find under **C:\ProgramData\Sadevio\appsettings.json**

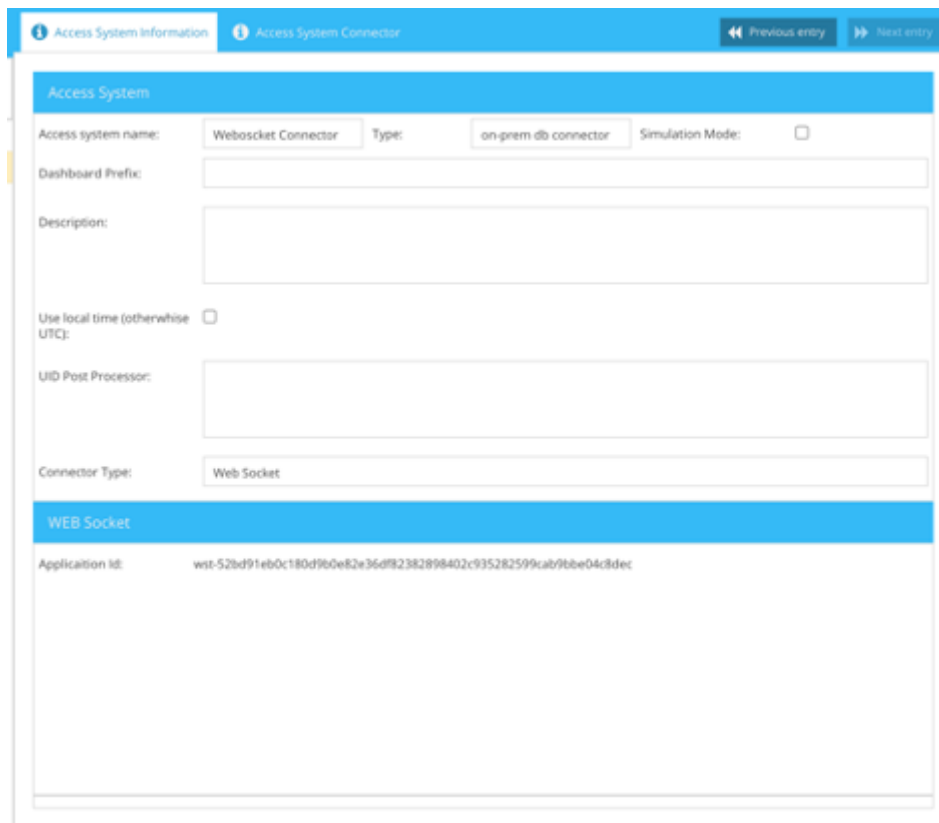
Configure Access Control Cloud Connector

Create a Sadevio connector token in the sadevio cloud system.

Go to Maintenance -> Access System -> New Access System.

As Connector Type, select Web Socket.

The system will generate a unique Application Id which you need for the service.



The screenshot shows the 'Access System Connector' configuration page in the Sadevio system. The page has a blue header with 'Access System Information' and 'Access System Connector' tabs, and navigation buttons for 'Previous entry' and 'Next entry'. The main form is titled 'Access System' and contains the following fields:

- Access system name:** Websocket Connector
- Type:** on-prem db connector
- Simulation Mode:** ☐
- Dashboard Prefix:** (empty text box)
- Description:** (empty text box)
- Use local time (otherwise UTC):** ☐
- UID Post Processor:** (empty text box)
- Connector Type:** Web Socket

Below the 'Access System' section, there is a 'WEB Socket' section with the following information:

- Application Id:** wst-52bd91eb0c180d9b0e82e36df82382898402c935282599cab9bbe04c8dec

Now we need to configure the windows service. Open the configuration file as Administrator C:\ProgramData\Sadevio\appsettings.json.

Simply open it with a text editor.

"cloud_connector": true,

"cloud_connector_url": "wss://cloud.sadevio.com/sadevio_socket_module/socket/{0}/accesscontrol",

"cloud_connector_application_id": "wst-52bd91eb0c180d9b0e82e36df82382898402c935282599cab9bbe04c8dec ",

"access_system_database_connector": "Data Source=192.168.1.174\\SQLEXPRESS,1433;Initial Catalog=Velocity;User Id=sadevioin

"access_system_database_connector_dialect": "NHibernate.Dialect.MsSql2012Dialect, NHibernate",

"access_system_database_connector_connection_driver": "NHibernate.Driver.SqlClientDriver"

Passport Reader Integration

"passport_reader_uv": true,
"passport_reader_ir": true,
"passport_authentication": true,

Passport Reader Authentication

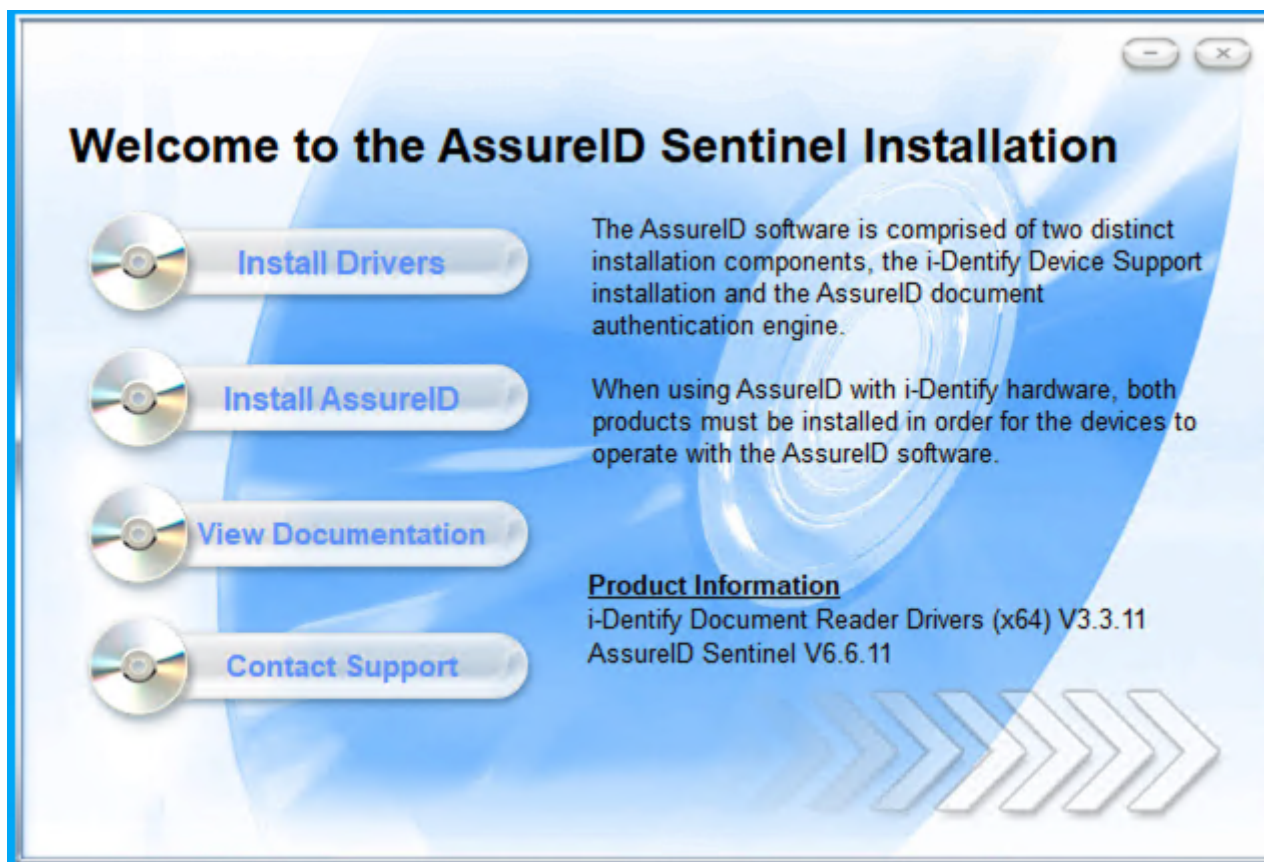
To activate the authentication feature with Assure Id, you need to set following configuration

"passport_reader_uv": true,

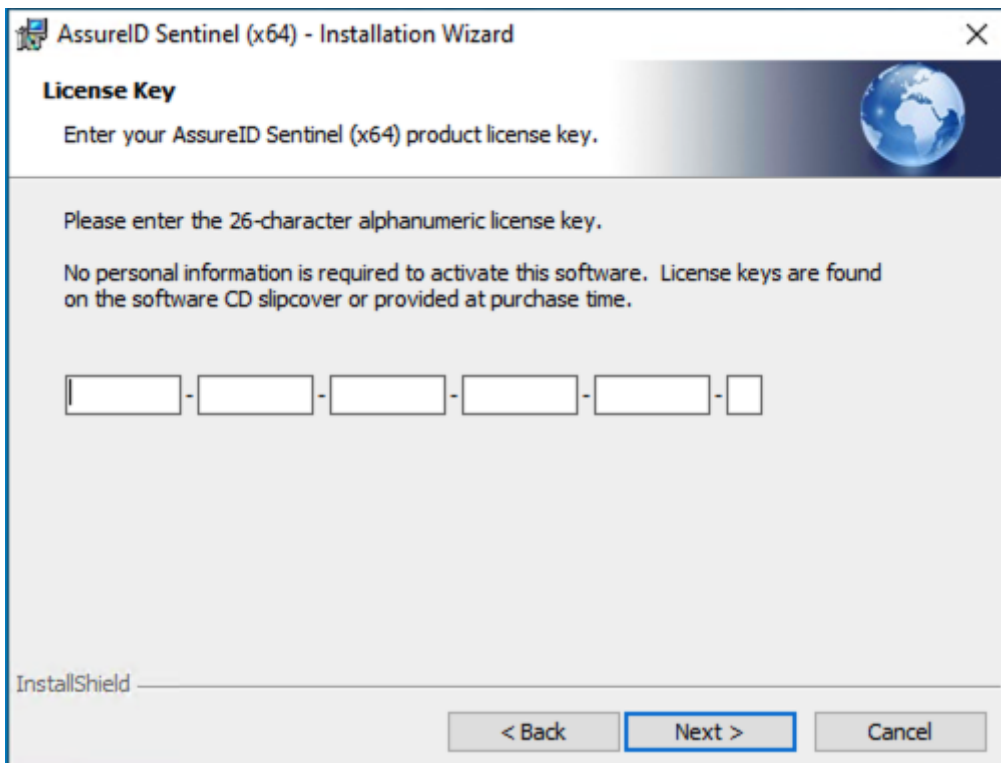
"passport_reader_ir": true,

"passport_authentication": true,

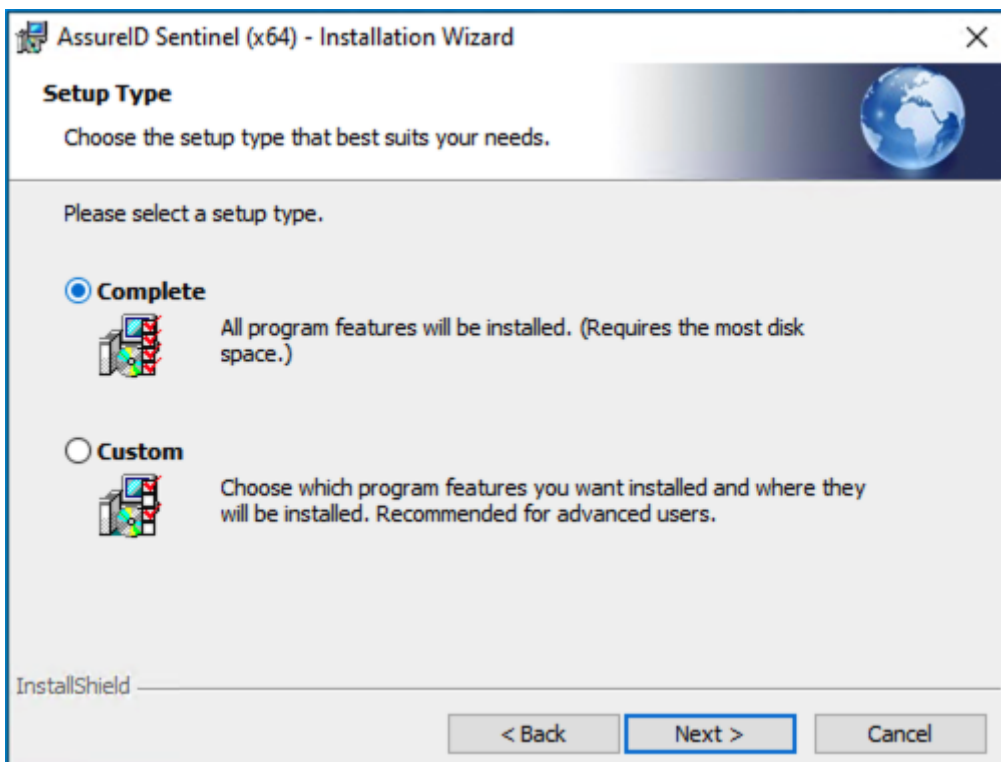
https://drive.google.com/drive/folders/1EU_DoR-2Mjub9eWgm-omcPZlqcF0o64M?usp=sharing



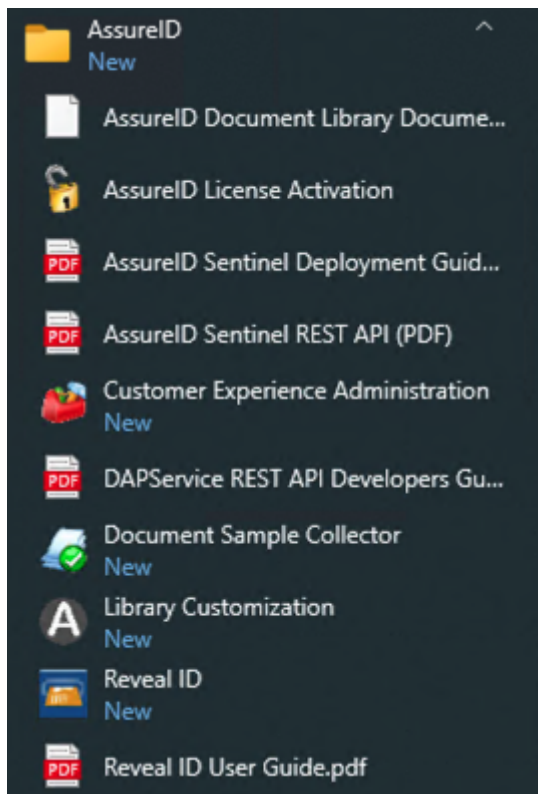
Enter your license code



Select the option to install "Complete"



Activate your license with the AssureID License Activation



Welcome to AssureID Sentinel™ License Activation

The AssureID software has not been activated.

The AssureID software requires a license key in order to operate.

You do not need to provide your name or other personal information when you activate this software. Please enter the 26 alpha-numeric license key provided at purchase time.

License Key

Change

Activation Method

☒ **Automatic**

☒ Internet

☐ License server

Verify

☐ **Manual**

☐ Create a license activation request file

☐ Install an activated license file

Activate License